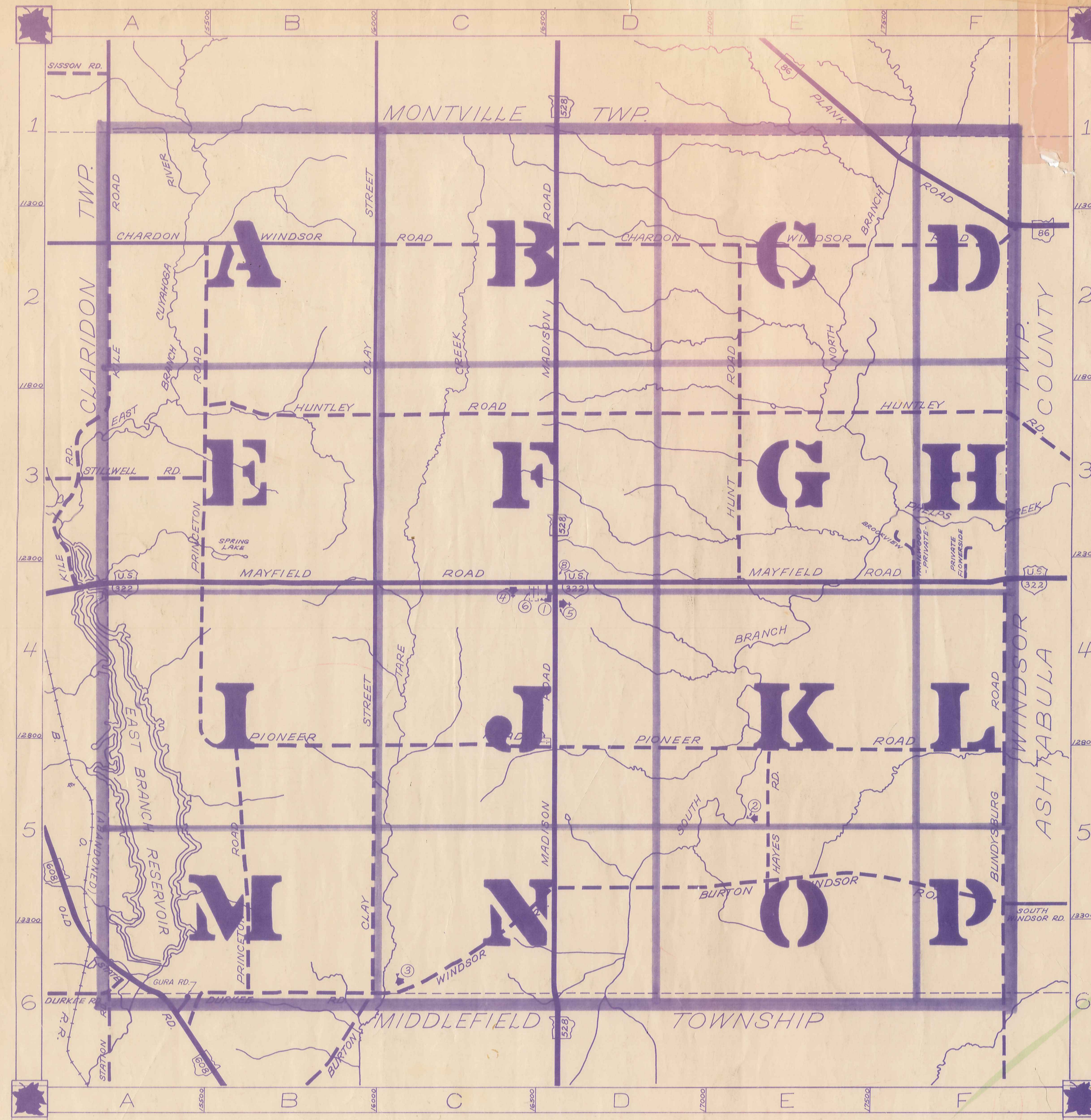


ROAD INDEX



A	J	S	STILLWELL RD. A3
1	B	K	BROOKVIEW RD. F3 KILE RD. A1-A4 TRAILWOOD RD. F4
2	C	L	BUNDYSBURG RD. F4F6 BURTON WINDSOR RD. C6-F5
3	D	M	CHARDON WINDSOR RD. A2-F2 CLAY STREET B1-B6
4	E	N	MADISON RD. D1-D6 MAYFIELD RD. A4-F4
5	F	O	DURKEE RD. A6-B6
6	G	P	HUNTLEY RD. A6-B6
	H	Q	OLD STATE RD. A6
	I	R	FLORISSIDE RD. F4
	J	S	PIONEER RD. B5-F5 PLANK RD. E1-F2 PRINCETON RD. B2-B6
	K	T	HAYES RD. E5 HUNTLEY RD. B3-F3 HUNT RD. E2-E4
	L	U	
	M	V	
	N	W	
	O	X	
	P	Y	
	Q	Z	
	R		
	S		
	T		
	U		
	V		
	W		
	X		
	Y		
	Z		

HUNTZBURG TOWNSHIP

SCALE: 1" = 2000'

ROBERT L. PHILLIPS
GEAUGA COUNTY ENGINEER

① HUNTZBURG ELEM. SCHOOL ⑦ HUNTZBURG CEMETERY
 ② AMISH SCHOOL ⑧ UNITED STATES POST OFFICE
 ③ AMISH SCHOOL ⑨
 ④ HUNTZBURG BAPTIST CH. ⑩
 ⑤ HUNTZBURG CONGREGATIONAL CH. ⑪
 ⑥ HUNTZBURG CEMETERY ⑫

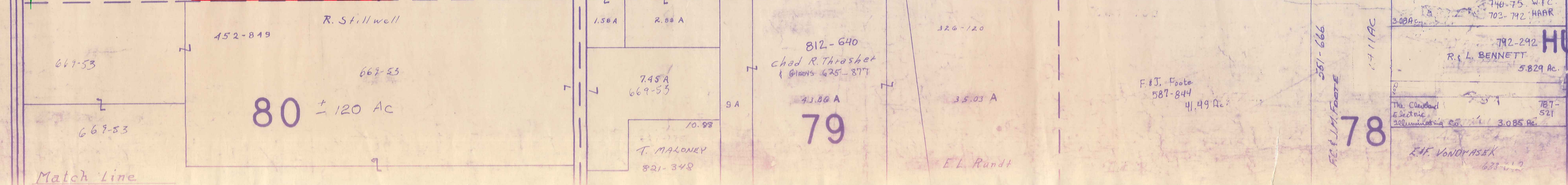
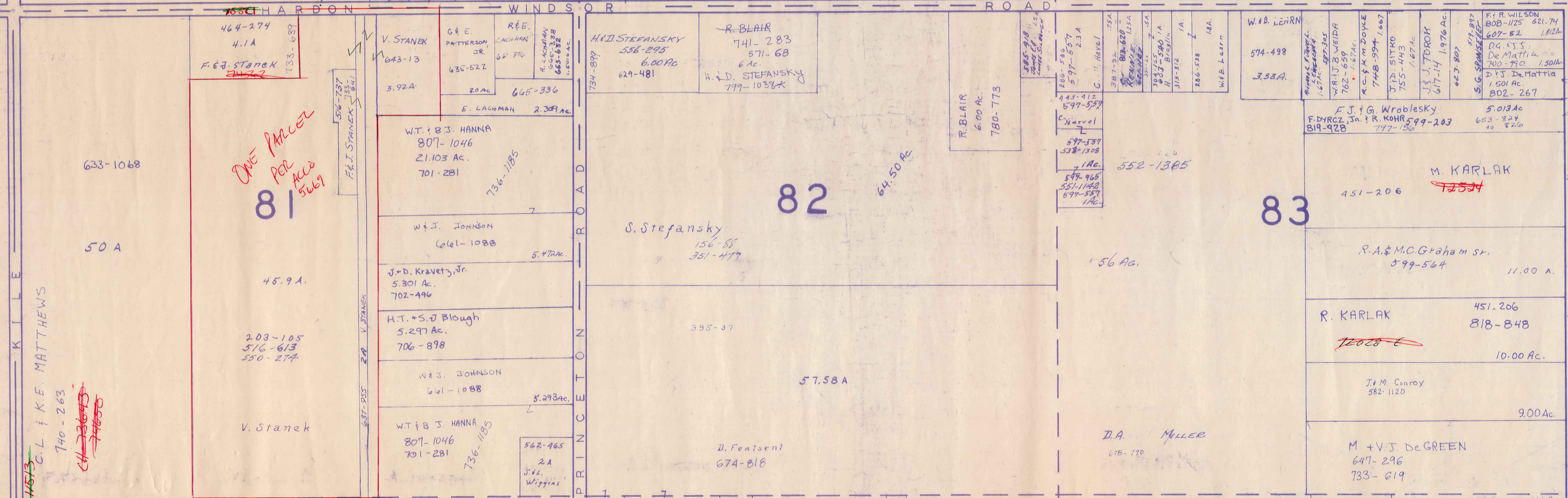
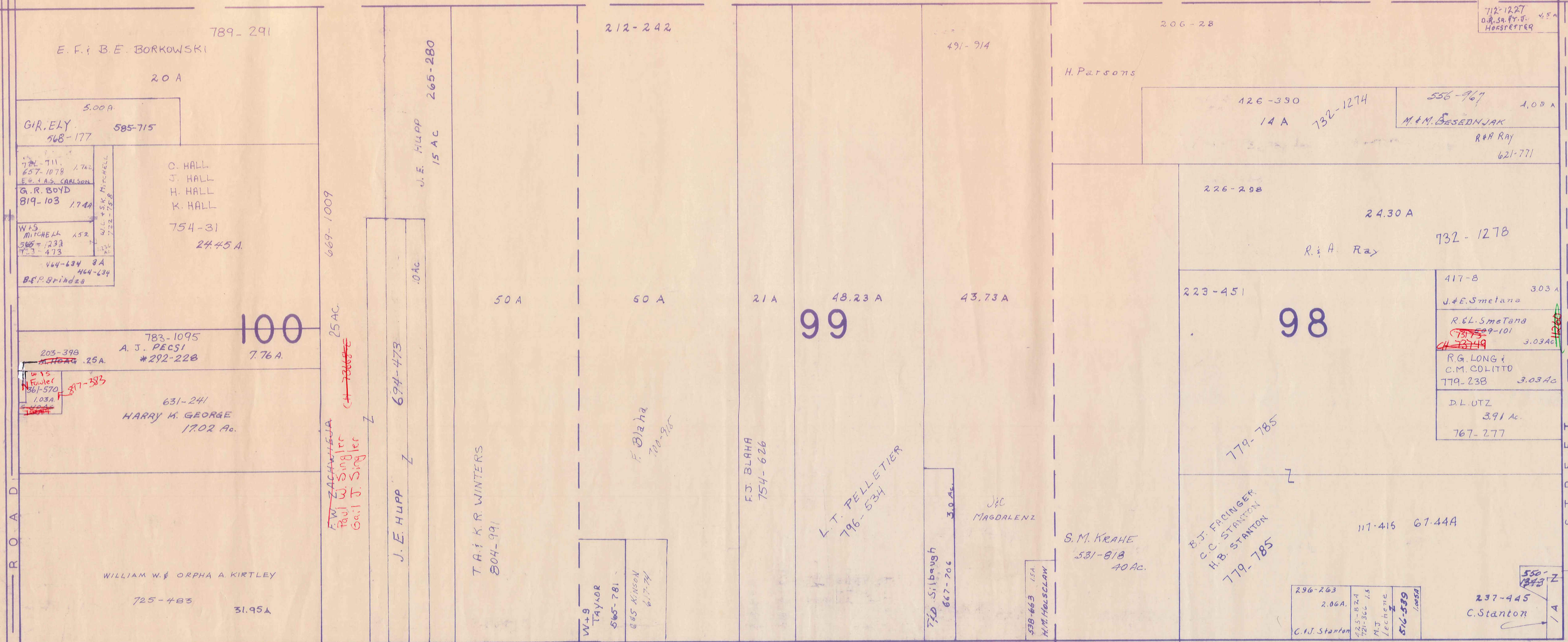
- - - - UNPAVED ROADS - - - - TOWNSHIP LINE
 ——— PAVED ROADS - - - - COUNTY LINE

done 5-6-93

MONTVILLE TOWNSHIP

TOWNSHIP

CLARIDON



SCALE 1 = 300

JAN 1, 1989

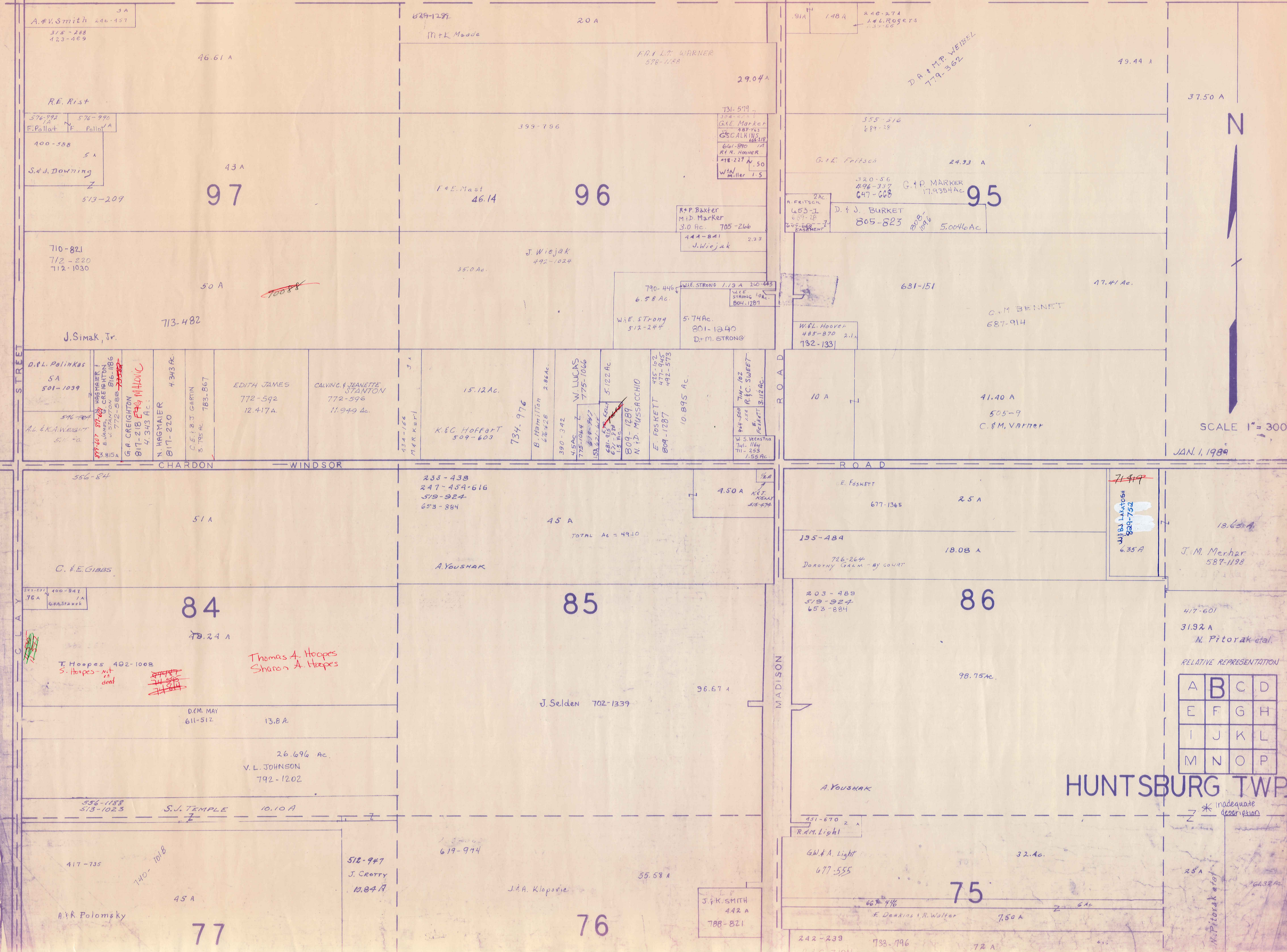
A	B	C	D
E	F	G	H
I	J	K	L
M	N	O	P

HUNTSBURG TWP

RELATIVE REPRESENTATION
 100 - Max size
 E. Filarezik
 615-1044
 3.09 Ac
 *Inadequate description
 Match Line

MONTVILLE

TOWNSHIP



SCALE 1" = 300'

JAN. 1, 1989

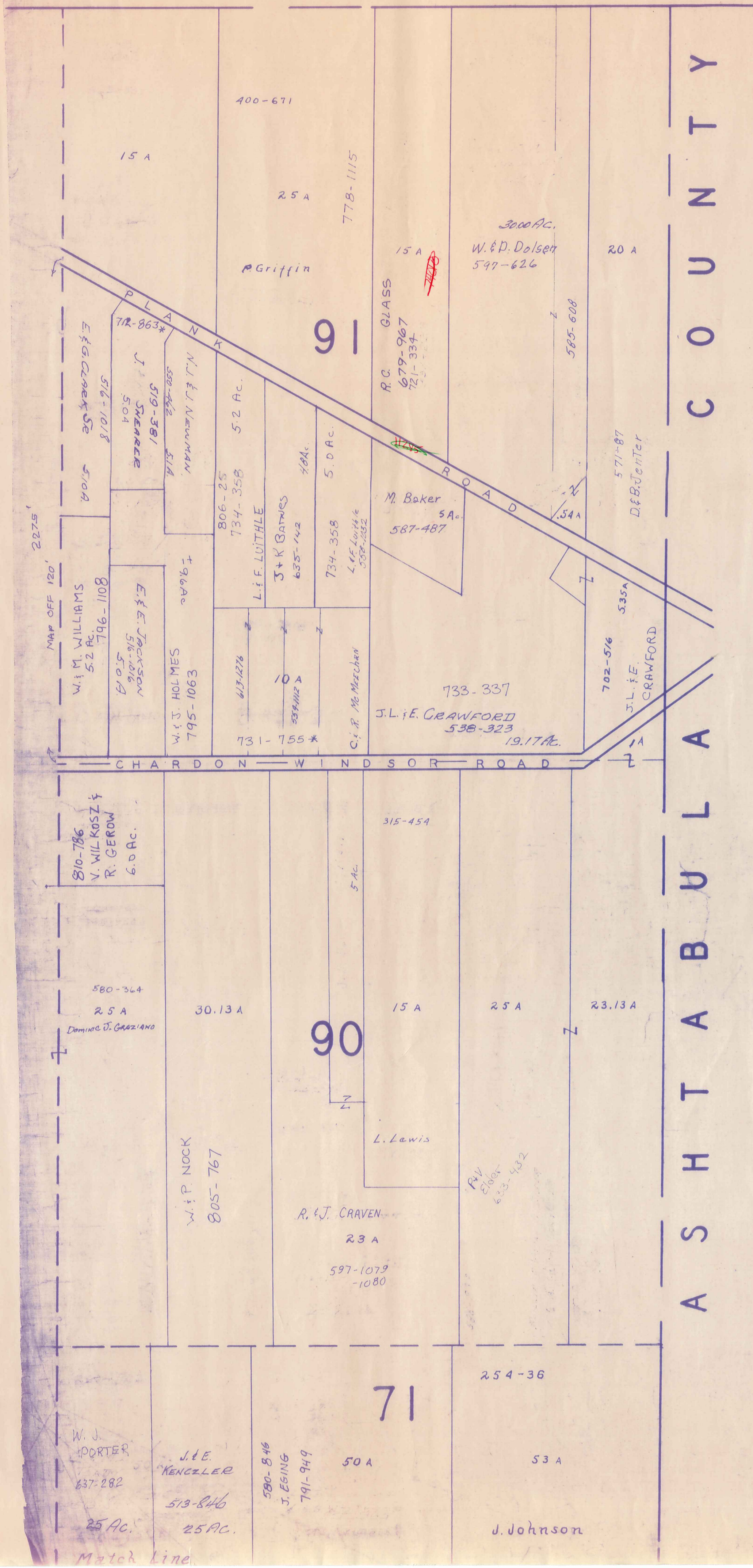
A	B	C	D
E	F	G	H
I	J	K	L
M	N	O	P

HUNTSBURG TWP.

* inadequate description

M. Pitorak et al.

MONTVILLE TWP.



A S H T A B U L A C O U N T Y



SCALE 1"=300'

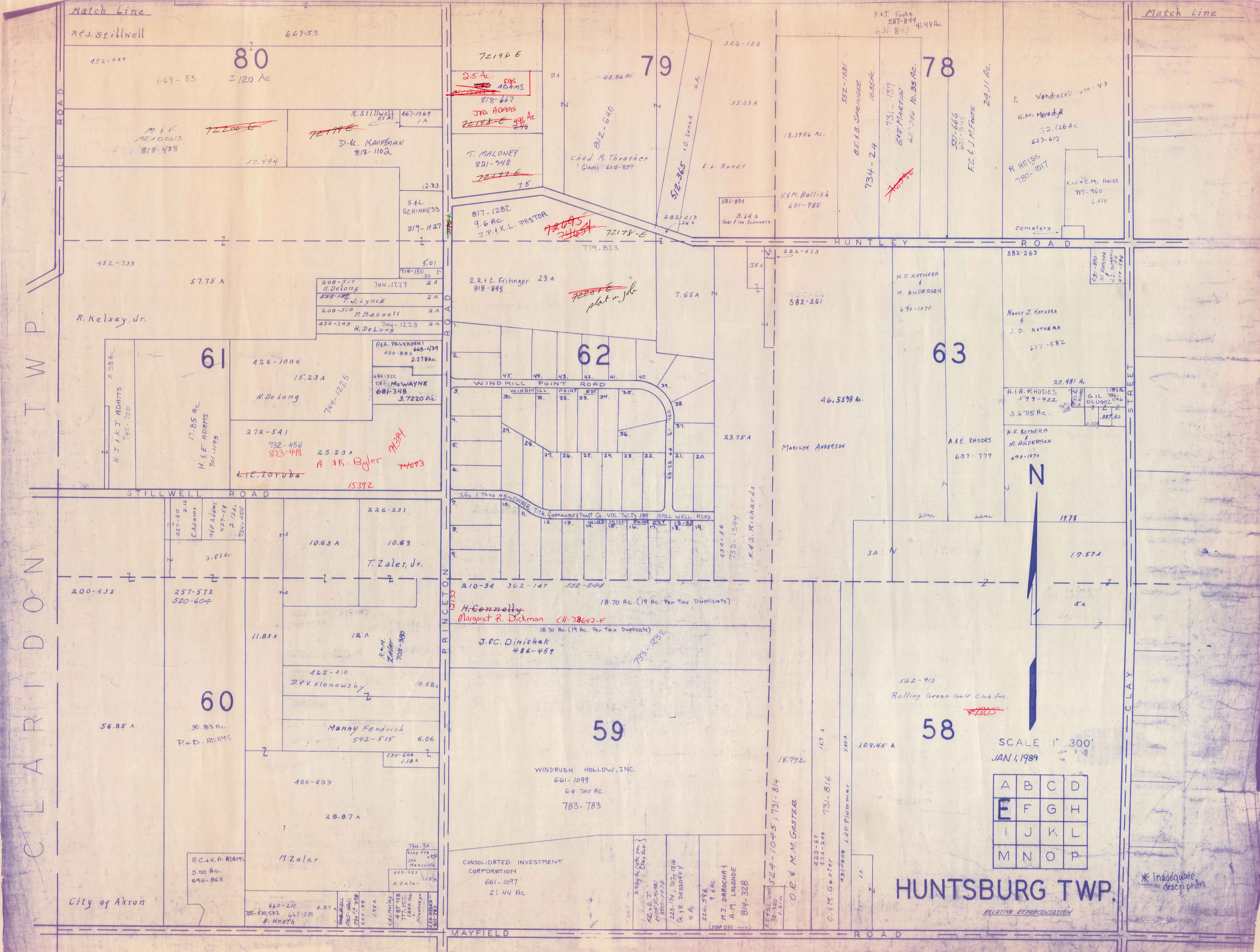
JAN. 1, 1989

* Inadequate description

A	B	C	D
E	F	G	H
I	J	K	L
M	N	O	P

HUNTSBURG TWP.

RELATIVE REPRESENTATION



CLARIDON TWP

Match Line

Match Line

R. J. Stillwell

667-53
80
± 120 Ac

M. & V. MEADOWS
818-488

D.H. KAUFMAN
812-1102

R. Kelsey, Jr.

61
426-1006
15.23 A
H. De Long

60
56.85 A
30.83 Ac.
P. & D. ADAMS

11.83 A
12 A
R. H. Zaller
703-380

Manny Fendrich
542-515
6.06

M. Zalar

City of Akron

72196 E
2.5 Ac. DKS ADAMS
818-667

J. D. ADAMS
72198 E 496 Ac
740

T. MALONEY
821-548
72197 E
7.5

817-1282
9.6 Ac.
J.P. & K.L. PRSTOR

R. R. & C. Fritinger 23 A
818-895

681-348
3.7220 Ac.
A. F. Byler
74673

10.63 A
10.63
T. Zaler, Jr.

18.70 Ac. (19 Ac. Per Tax Duplicate)
H. Connelly
Margaret R. Dickman (41-78612-E)

18.70 Ac. (19 Ac. Per Tax Duplicate)
J. C. Diniskak
486-459

WINDRUSH HOLLOW, INC.
661-1099
64.760 Ac.
783-783

CONSOLIDATED INVESTMENT CORPORATION
661-1097
21.44 Ac.

79
43.86 Ac.

Chad R. Thresher
Gladis - 625-897

72178-E

7.65 A

WINDMILL POINT ROAD

18.70 Ac. (19 Ac. Per Tax Duplicate)

18.70 Ac. (19 Ac. Per Tax Duplicate)

18.70 Ac. (19 Ac. Per Tax Duplicate)

661-1099
64.760 Ac.
783-783

CONSOLIDATED INVESTMENT CORPORATION
661-1097
21.44 Ac.

78
18.3956 Ac.

R.F.M. Ballish
601-988

582-261

46.5398 Ac.

MARILYN ANDERSON

17.78

17.78

582-913
Rolling Green Golf Club Inc.

109.45 A

HUNTSBURG TWP.

78
10.35 Ac.

731-137
6187 MARTIN

582-263

20.981 Ac.

A. & E. RHODES
607-779

17.78

17.78

582-913
Rolling Green Golf Club Inc.

109.45 A

HUNTSBURG TWP.

78
24.11 Ac.

Vondrasek 470-473
H.M. Morady
32.126 Ac
623-612

R. HEISS
780-1017

20.981 Ac.

A. & E. RHODES
607-779

17.78

17.78

582-913
Rolling Green Golf Club Inc.

109.45 A

HUNTSBURG TWP.

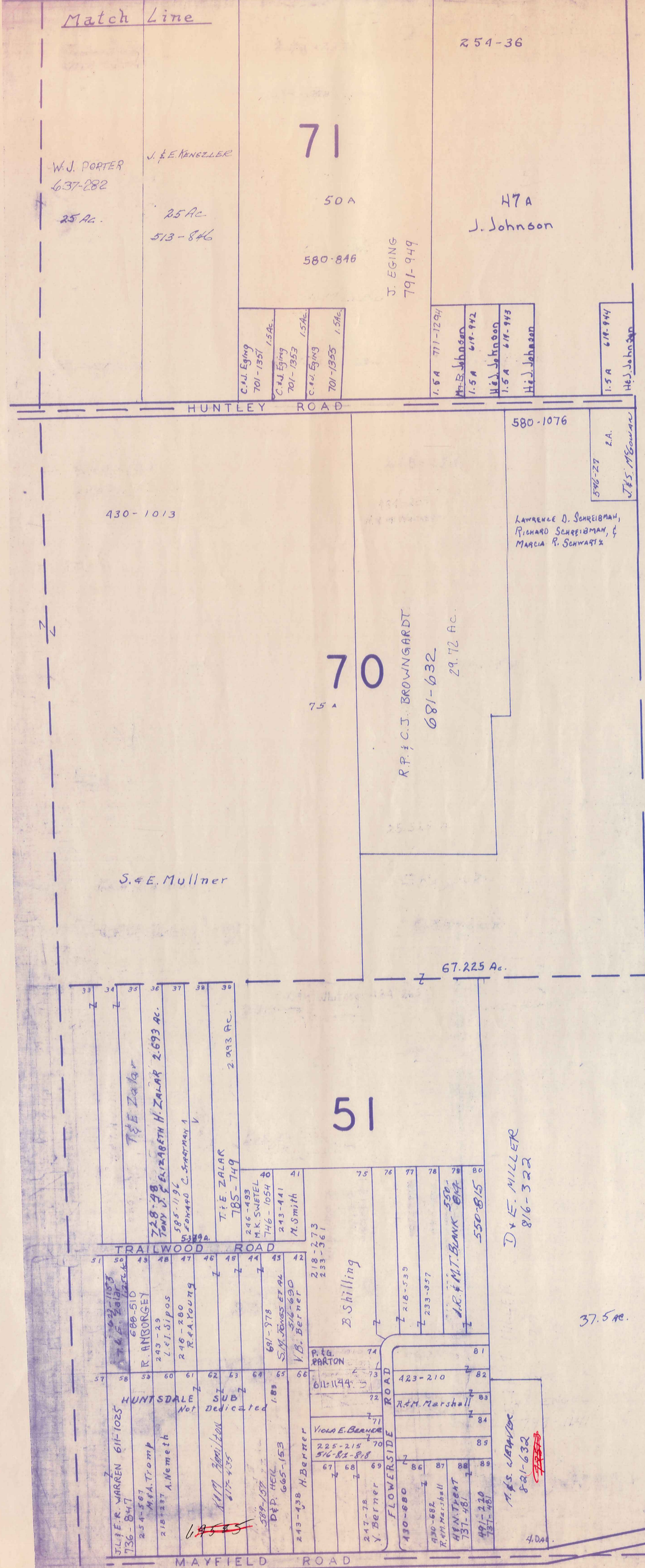
SCALE 1" = 300'
JAN 4, 1989

A	B	C	D
E	F	G	H
I	J	K	L
M	N	O	P

HUNTSBURG TWP.

RELATIVE REPRESENTATION

* Inadequate description



A S H T A B U L A C O U N T Y



* Inadequate description

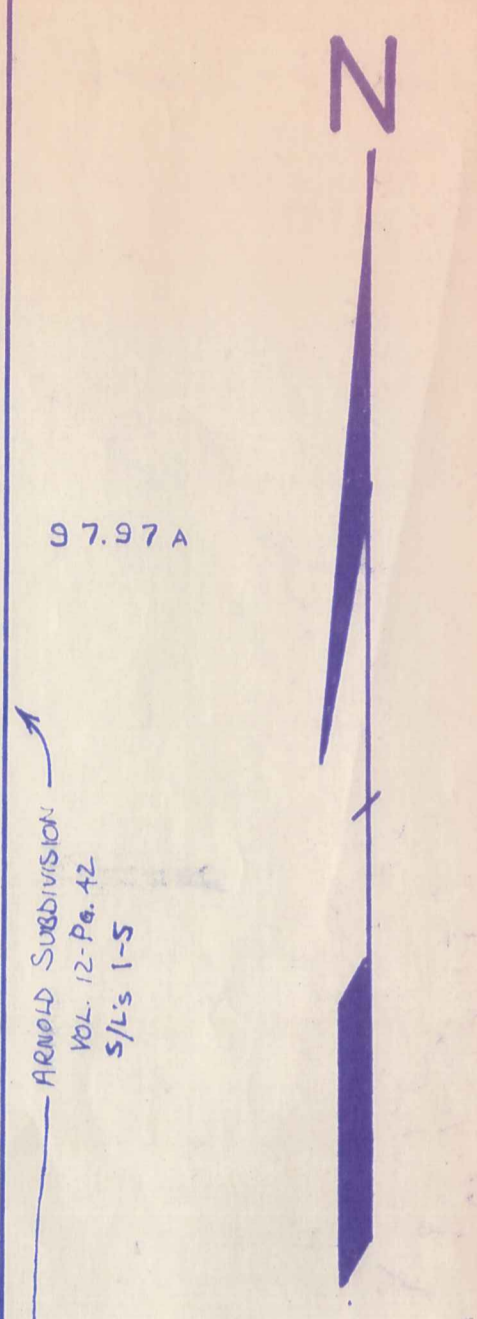
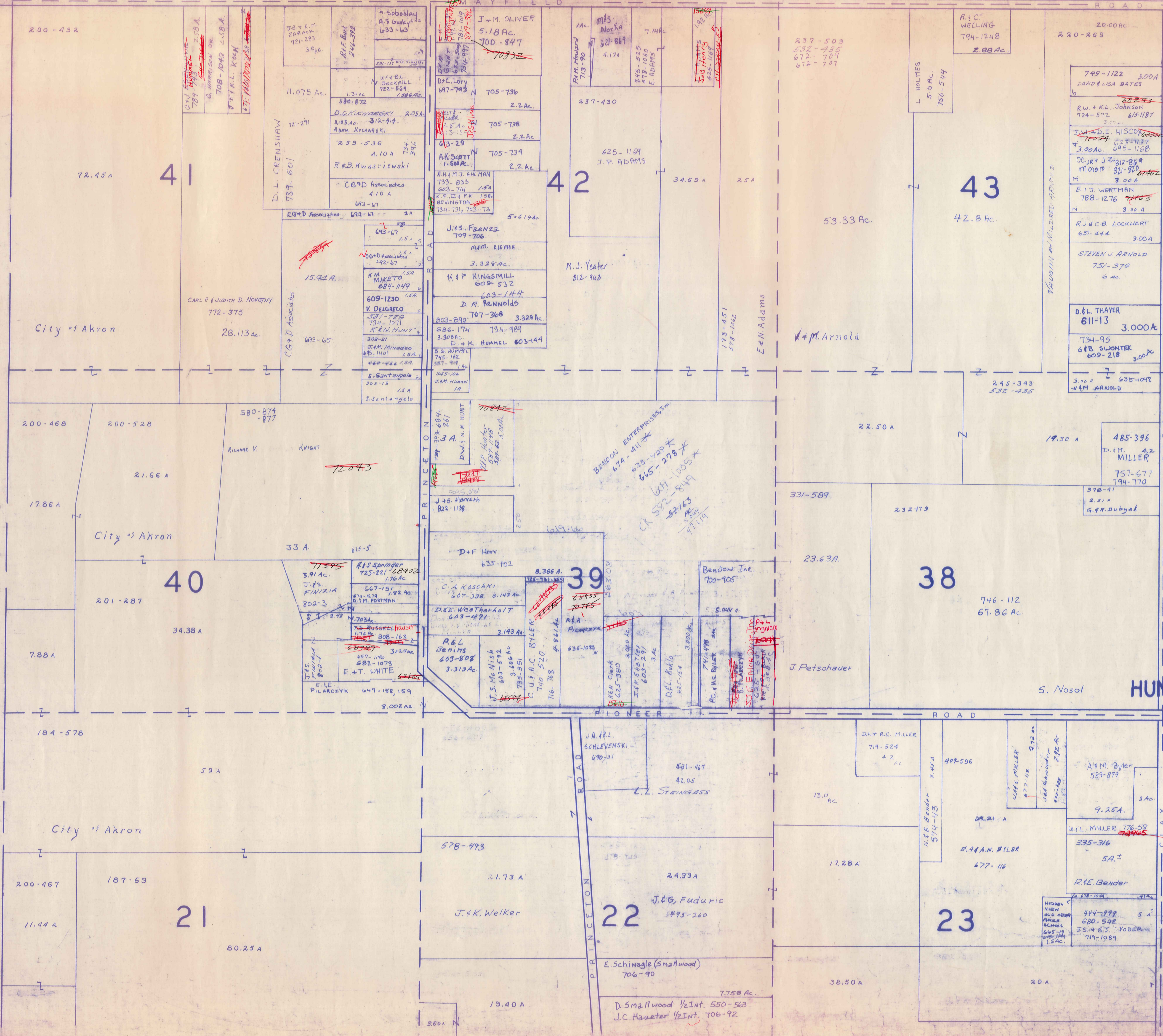
JAN 1, 1988
Scale 1" = 300'

RELATIVE REPRESENTATION

A	B	C	D
E	F	G	H
I	J	K	L
M	N	O	P

HUNTSBURG TWP.

CLARIDON TOWNSHIP

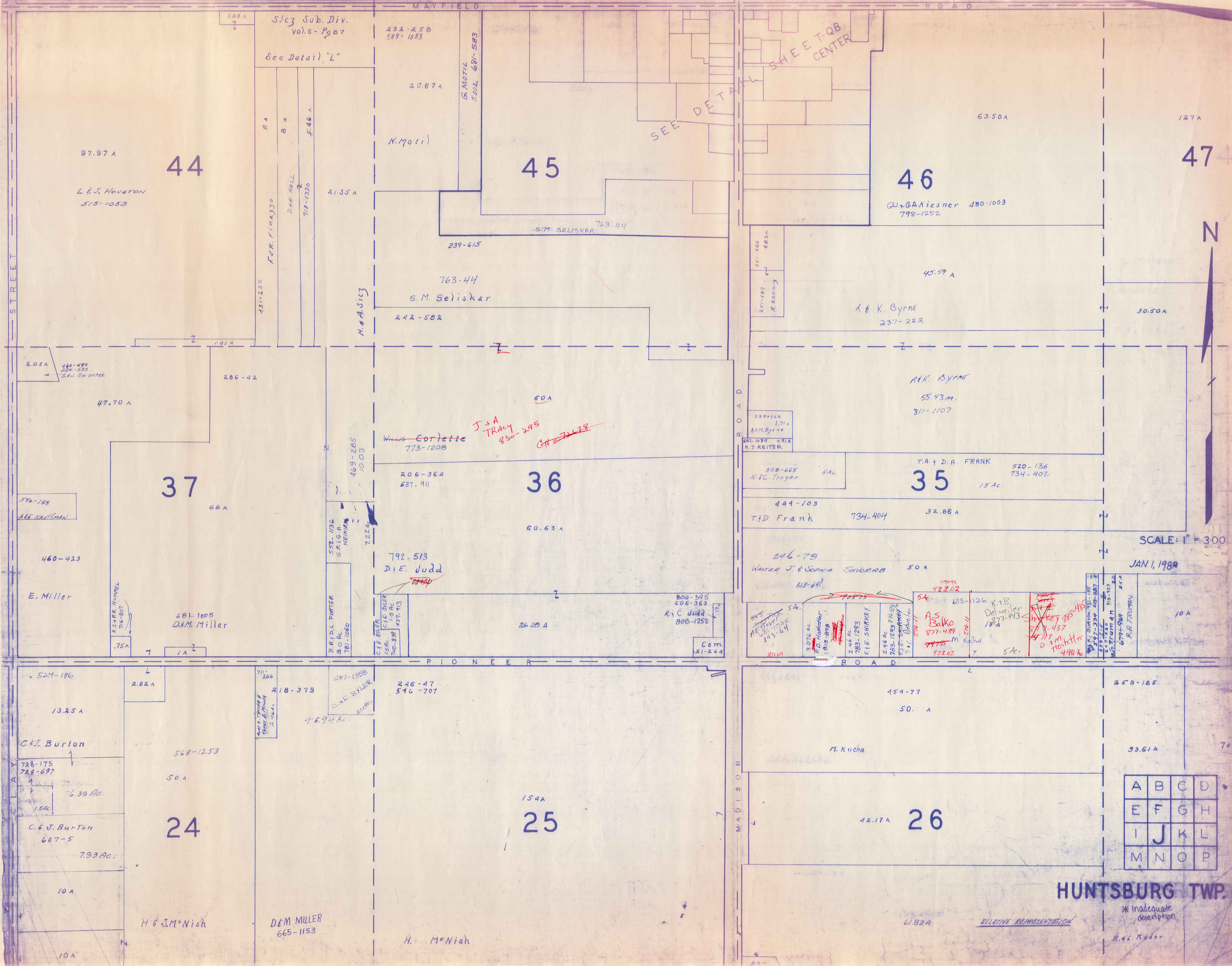


SCALE 1"=300'
JAN 1, 1989
RELATIVE REPRESENTATION

A	B	C	D
E	F	G	H
I	J	K	L
M	N	O	P

HUNTSBURG TWP.

* Inadequate description



44

45

46

47

37

36

35

24

25

26

A	B	C	D
E	F	G	H
I	J	K	L
M	N	O	P

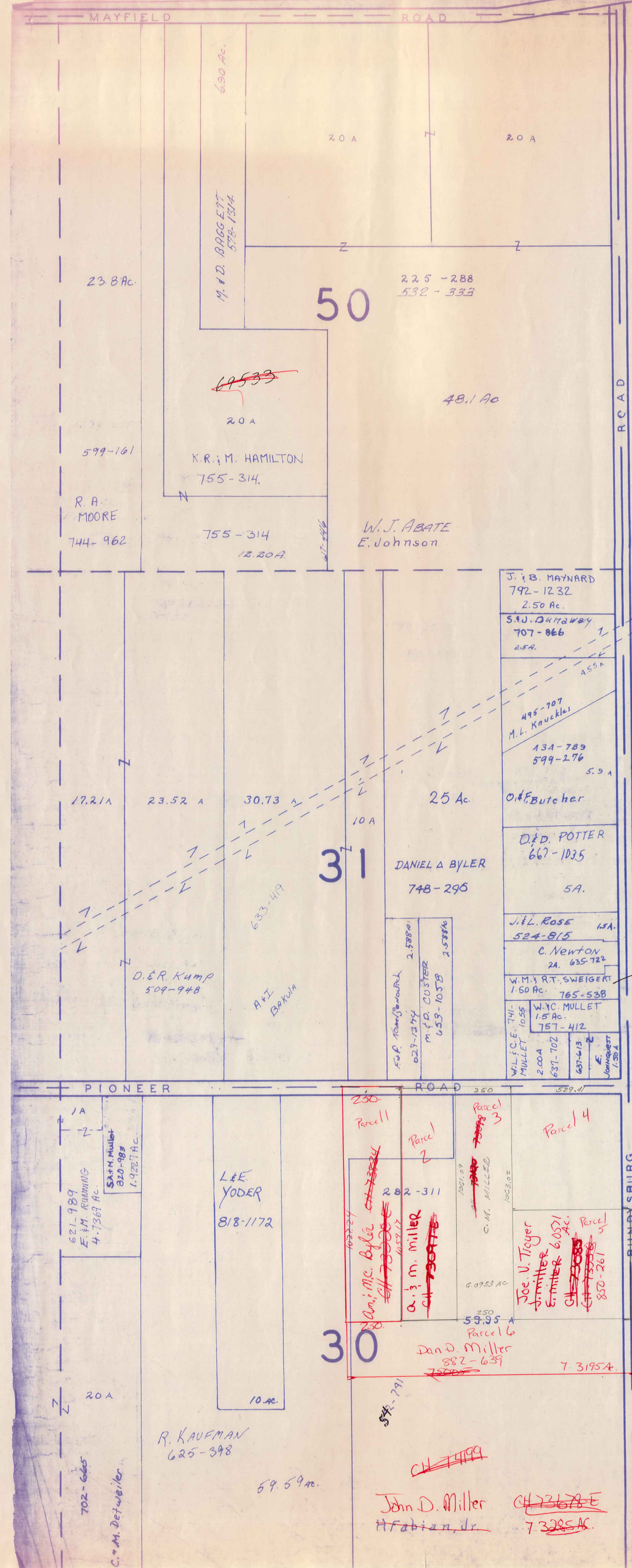
HUNTSBURG TWP.

* Inadequate description
R.L. Kader

SCALE: 1" = 300'

JAN 1, 1989

1.03 A
Sic3 Sub. Div. vol. 6 - Page 7
See Detail "L"
232-258
589-1053
2067 A
G. MOTIL
5004 687-583
97.97 A
L. & J. Houston
515-1053
8 A
8 A
F.46 A
21.35 A
N. Motil
763-44
S.M. SELISKAR
239-615
763-44
S.M. Seliskar
242-582
45.59 A
K & K. Byrne
237-222
30.50 A
127 A
2.03 A
460-480
224-538
S.W. Swantek
47.70 A
286-42
50 A
WILLIS Corlette
773-1208
J & A Tracy
830-295
CH 7-113
206-364
637-911
469-265
10.03
792-513
D.E. Judd
206-595
206-363
R.C. Judd
808-1252
Cem.
21-264
576-188
A & E KAUFMAN
460-423
E. Miller
681-1005
D.M. Miller
716-807
A.S.P.R. HUMMEL
.75 A
552-1136
G.R.G.A.
NEIKIRK
7.22 A
3.R.D.L. PORTER
S.O. AC.
781-1060
C.F. BYLER
158R.
740-839
637-913
808-595
206-363
R.C. Judd
808-1252
Cem.
21-264
524-186
13.25 A
C.J. Burton
728-175
728-697
6.39 Ac.
1.5 AC.
C. & J. Burton
607-5
7.93 Ac.
10 A
10 A
H & J.M. Nish
2.02 A
711-266
218-379
687-1358
C.W.E. BYLER
208 AC.
4694 Ac.
246-47
546-707
154 A
154 A
25
154 A
50 A
M. Kucha
42.17 A
26
259-185
93.61 A
70 A
61.82 A
RELATIVE REPRESENTATION
* Inadequate description
R.L. Kader



A S H T A B U L A C O U N T Y

MAYFIELD ROAD US 322							
1	2	3	4	5	6	7	8
1.08 A	1 A	1 A	1 A	.60 A	1 A	1 A	1.13 A
409-391 652-1111 F.F. Brown	431-239 F.F. Finazzo	285-498 H. Keyes et al	D.H. HML 1.90				

SICZ SUBDIVISION
VOL. 6 PG. 87
LOT 44
SCALE 1" = 100'



SCALE 1" = 300'

JAN 1, 1989

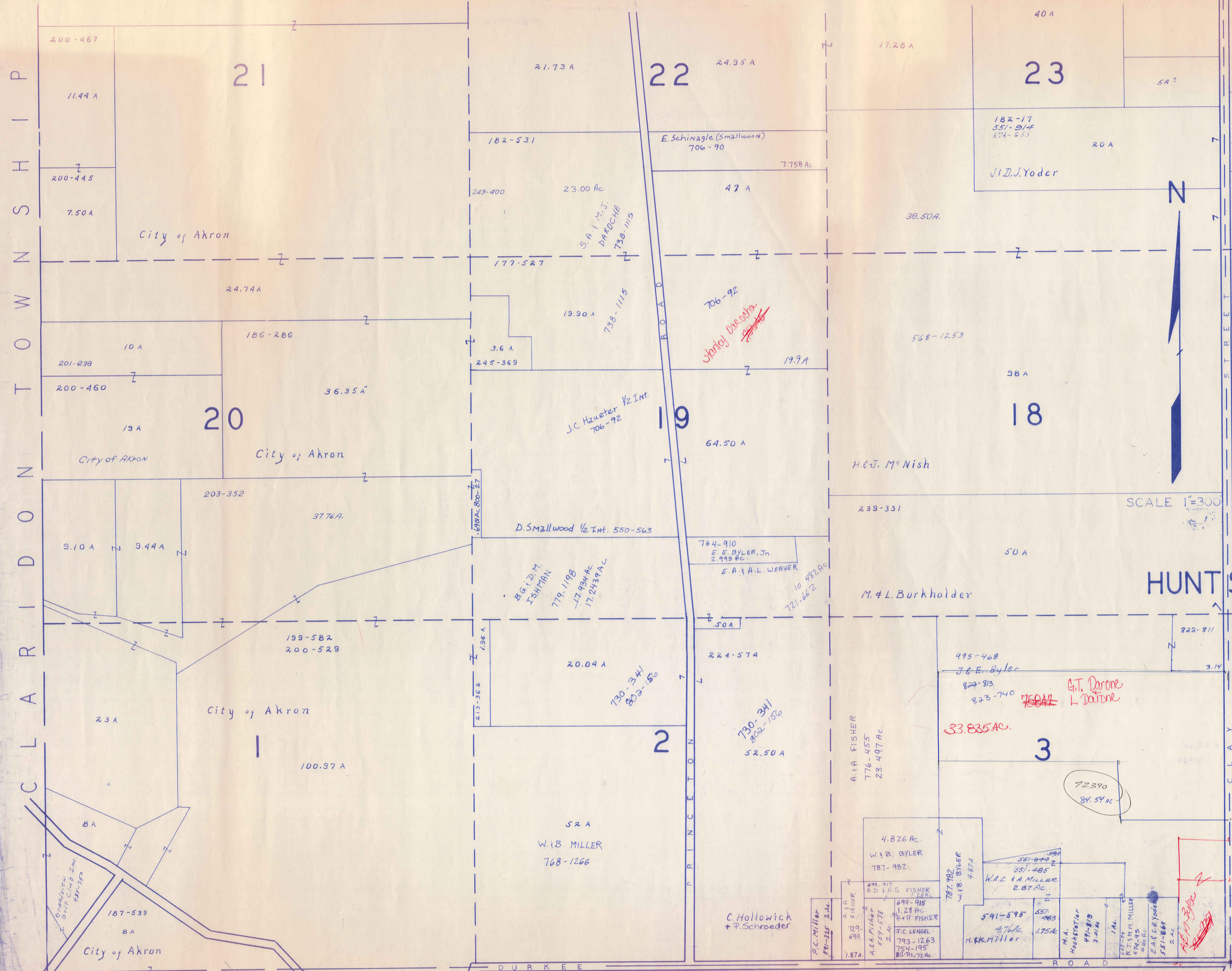
* Inadequate description
RELATIVE REPRESENTATION

A	B	C	D
E	F	G	H
I	J	K	L
M	N	O	P

HUNTSBURG TWP.

C L A R I D O N T O W N S H I P

M I D D L E F I E L D T O W N S H I P



SCALE 1"=300'

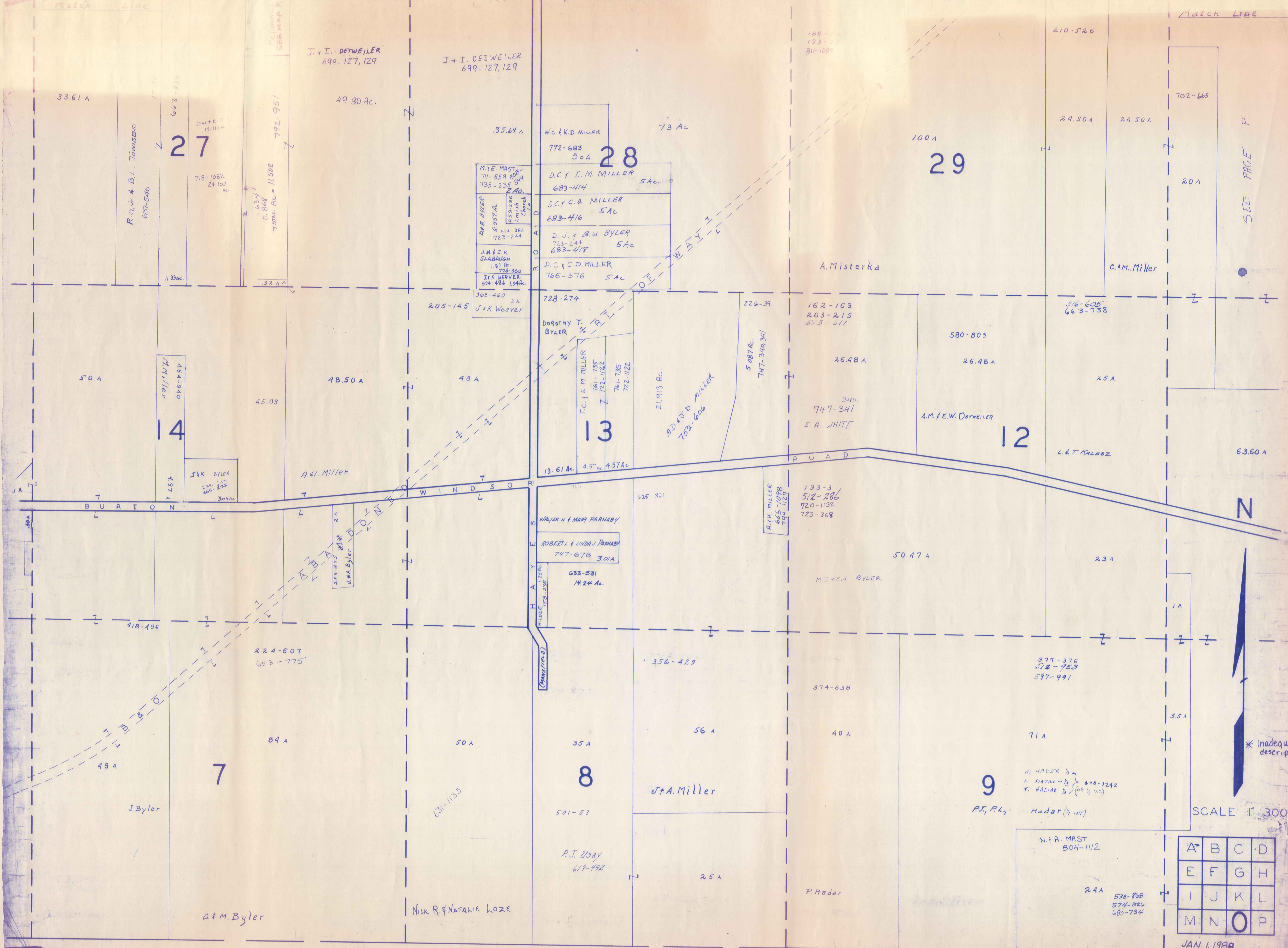
HUNT SBURG TWP

A	B	C	D
E	F	G	H
I	J	K	L
M	N	O	P

RELATIVE REPRESENTATION

JAN 1, 1989

* Inadequate description



SEE PAGE P

N

* Inadequate description

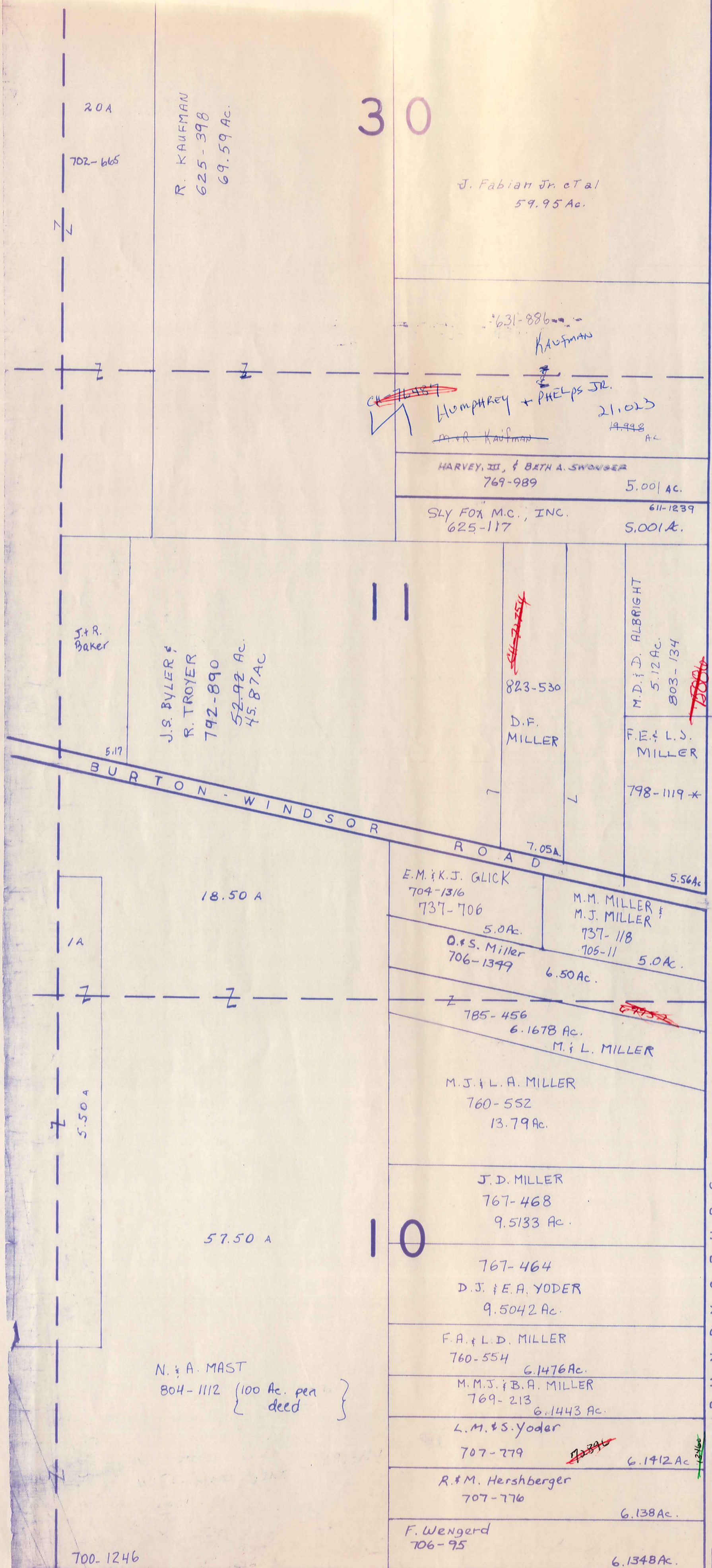
SCALE 1" = 300'

A	B	C	D
E	F	G	H
I	J	K	L
M	N	O	P

JAN. 1, 1984

M I D D L E F I E L D T O W N S H I P H U N T S B U R G T W P

RELATIVE REPRESENTATION



ASH TABULA COUNTY ROAD

MIDDLEFIELD TWP.

SCALE 1" = 300'
JAN 1, 1989

RELATIVE REPRESENTATION

* Inadequate Description

A	B	C	D
E	F	G	H
I	J	K	L
M	N	O	P

HUNTSBURG TWP



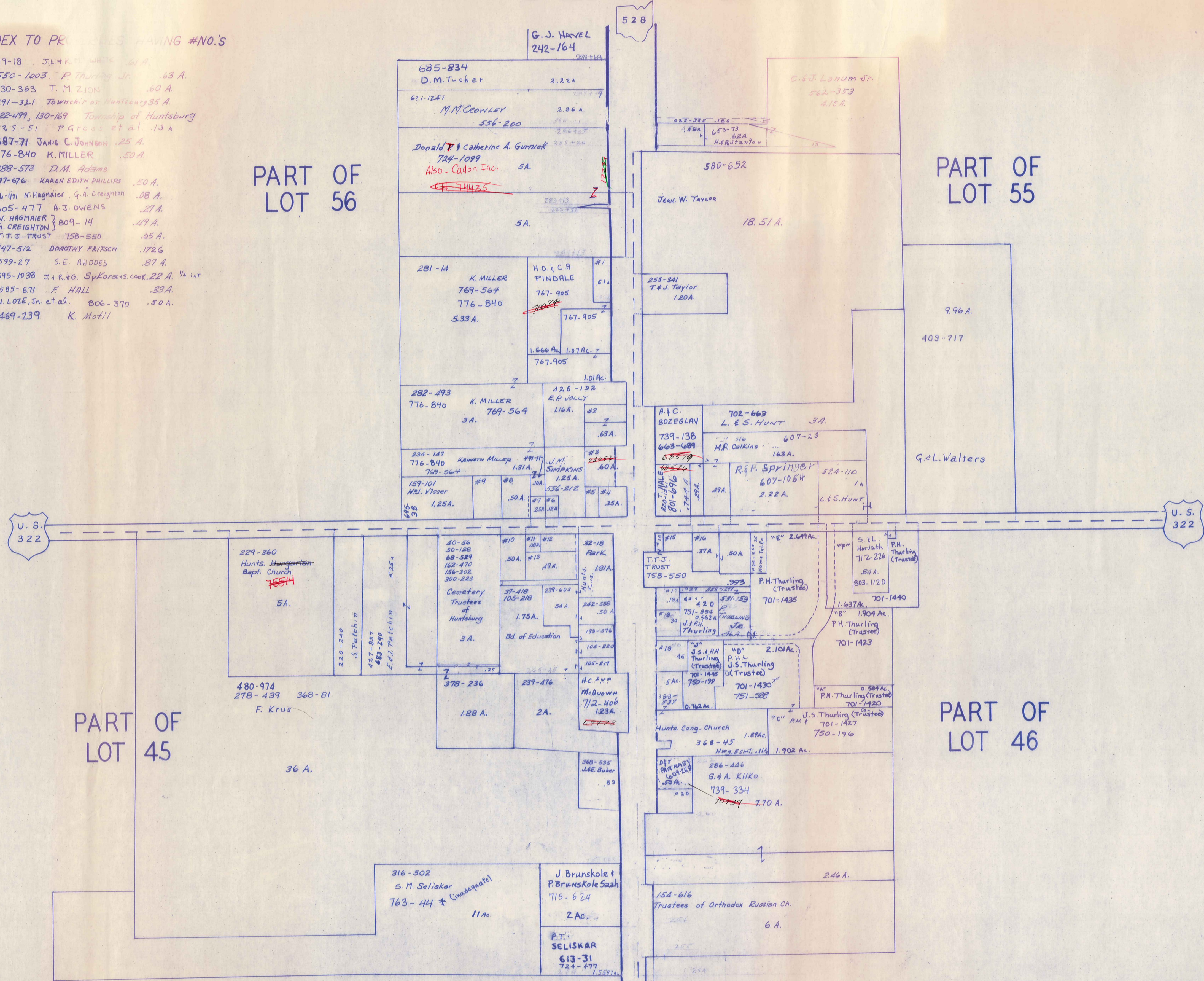
HUNTSBURG CENTER

INDEX TO PROPERTIES HAVING #NO.'S

- #1 719-18 J.L. & K. WHITE .61 A.
- #2 550-1003 P. Thurling Jr. .63 A.
- #3 730-363 T. M. ZION .60 A.
- #4 491-321 Township of Huntsburg 35 A.
- #5 122-499, 130-169 Township of Huntsburg
- #6 725-51 P. Gross et al. 13 A.
- #7 587-71 JAMES C. JOHNSON .25 A.
- #8 776-840 K. MILLER .50 A.
- #9 138-573 D.M. Adams
- #10 747-676 KAREN EDITH PHILLIPS .50 A.
- #11 814-111 N. Hagmaier, G.A. Creighton .08 A.
- #12 805-477 A.S. OWENS .27 A.
- #13 N. HAGMAIER } 809-14 .49 A.
- G. CREIGHTON }
- #14 T.T.J. TRUST 758-550 .05 A.
- #15 747-512 DOROTHY FRITZSCH .172 A.
- #16 599-27 S.E. RHODES .87 A.
- #17 695-1938 J. & R. G. Sykoras & S. Cook 22 A. 1/4 int
- #18 585-671 F. HALL .33 A.
- #19 N. LOZE, Jr. et al. 806-370 .50 A.
- #20 469-239 K. Motil

PART OF
LOT 56

PART OF
LOT 55



PART OF
LOT 45

PART OF
LOT 46

JAN. 1, 1989
SCALE: 1 in. = 200'

RELATIVE REPRESENTATION

* Inadequate description